

GARAGE DOOR

ES-PGD3040

Constructed of impact-resistant laminated glass and the highest-grade aluminum alloy to provide the most contemporary architectural design options.

System Description

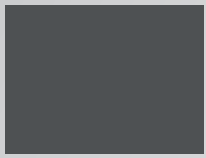
- Frame depth: 3"
- Sightline: 4 1/2 "
- Designed for 5/16", 7/16", 9/16" laminated glass
- Maximum size: 222" width x 168" height

Features

- Long lasting silicone weather-seals
- Stainless steel hardware components
- Premium nylon rollers with 3/4" stainless steel shaft
- Industrial grade stainless steel cables (5/32 & 3/16)
- Innovative panel-to-panel anti-deflection interlocking system
- Heavy-duty full angle tapered track (powder coated track options available)
- Available in multiple lite configurations (max single lite 144")
- Internal reinforcement adds maximum strength without sightline interference
- Available in standard, low-headroom, high-lift, and vertical track configurations



COLORS AND FINISHES



Silver



Dark Gray



Bronze



Black



White

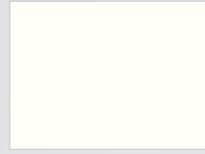
Hardware Finishes



Bronze



Silver



White



Black

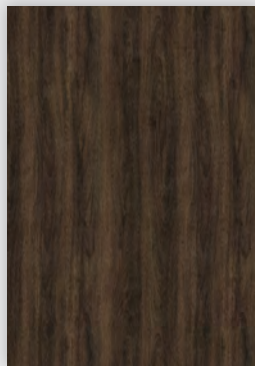
- Personalized colors and hardware finishes available
- Class 1 clear anodized finish is available upon request



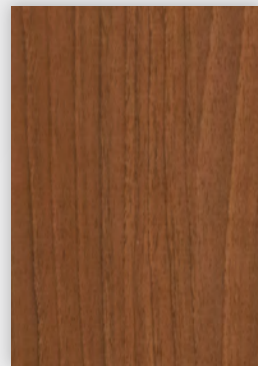
Neutral Oak 1498



Cypress Cinnamon 1490



Royal Walnut 1536



Noce Canella 1561



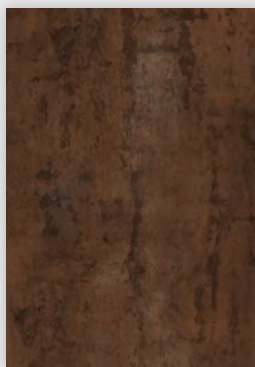
Classic Cherry 1474



Spiced Chestnut 1517



Industrial Concrete 3127



Terra Steel 3116



Industrial Slag 3147



Grey Slate 3156

The Prestige residential line is designed for sophistication and style. Each piece is carefully manufactured and checked for quality, ensuring full functionality and the ultimate end-user experience. These luxury windows and doors are built to the highest specifications to meet our exceptional standards.

Design. Quality. Luxury.

ESWINDOWS
The Power of Quality

Prestige
LINE

www.eswindows.com